



# THE FRIENDS OF BRAESIDE PARK NEWSLETTER

## Contents

Presidents Report	2
<b>Help Help Help</b>	3
'A Team' Activities	4
Nightwalk Program	5
AGM Report	5
Friends Major Project—Stump Art	5
Eagle Photo's—Kim Bradley	6
Activity Flyers	
Breakfast with the birds 18th Sept	7
Spring Walk 16th Oct	7
Bats & Nocturnal Animals 12th Nov	7
Bugs Butterflies & other insects	
26th Nov	7
Activity Calendar	8



### Braeside Park

Lower Dandenong Road,  
Braeside 3195  
Melway Map 88 D8

*The opinions expressed in this newsletter are the authors' and do not necessarily reflect those of Parks Victoria or its staff.*

Printed by Parks Victoria, Braeside Park



## **Presidents Report**

*By Judith Sise.*

### **AGM—President's Report 2015-2016**

Although the 2015-2016 year has disappeared quickly, the Friends' Group has worked hard to conserve the Park's indigenous vegetation and to support the Rangers and to encourage and welcome visitors.

A small hard working, enthusiastic Committee of 4 with the occasional member visitor met on the second Thursday of each month to plan activities for members and the public and to maintain the different environmental zones and to complete the various grant components.

The Nocturnal Walks have proved exceptional popular and Margaret, our Secretary, has been invaluable organising these nights. Frank, David, Margaret and I have guided many people around the Park to view the possums, frogmouths and of course, the rabbits and foxes.

Clean Up Australia was again popular with local school students and residents and business groups. A week of picking up litter (12 cubic metres) left the Park gleaming for all of a couple of days and then back it came. Litter is a real problem in the Park, wasting the Rangers' time and frustrating volunteers. Ideas for solving this problem are desperately needed.

Ranger Des arranged the Friends' Field trip to Walhalla which was a great success. John Preston drove the group on the Kingston Community bus. The ride on the West Gippsland Railway was a trip down memory lane with old fashioned tickets clipped by the guard. The tour of the Long Tunnel Mine was most interesting and the accommodation and food arranged by Des made this trip magical.

Activities such as Breakfast With the Birds, the Spring Walk, the Senior Walk, Nursery Open Day, Plantings to celebrate Environment Day and Wattle Day all were well attended and were a collaboration of the committee and Rangers. Each offers members and visitors an opportunity to learn about the environment and to enjoy the health benefits of working in a group for the collective good.

The Rangers have worked closely with the Green Army groups which have not only helped the participants of this program but had a huge advantage for the Park with mulch spread everywhere and many indigenous plants grown and established in the park.

The Victorian Field Naturalists completed two surveys of reptiles and BirdLife Australia continue to monitor birds on the fourth Friday of each month and combine this with the bird surveys carried out by Margaret and Ian Langdon and Steve McDonald and park staff and we have a pretty good base line on what birds reside and visit the park. Our Treasurer, Bev, with her long association with the Park, continues to keep tabs on the flora within the Park and co-ordinates the monitoring of the waterways through the Waterwatch program. The rangers complete Frog Watch in Autumn and Spring. There are however still gaps in our knowledge of all fauna such as insects and fungi. This could be a goal for 2017.

AGM—President's Report 2015-2016 cont.....

The Newsletter edited by Kathryn and Des has been a great communicator of all Friends' activities. The Web site monitored and maintained by Frank is instrumental in informing the public of our presence and numerous activities. John and Des have maintained a valuable link with the Men's Shed and there has been collaboration between the Friends' Group and this group to build seating throughout the park. The Men's' Shed Group's willingness to be involved in construction of Friends' plans has and will be instrumental in further developing the attractiveness of the Park for all.

The committee has made progress in developing the Phar Lap Track and will continue to further expand this historical link in 2017. The carvings of the old cypress trees continued and are proving a popular attraction in the park. Of course, the park has not escaped the great Pokeman invasion but whether this is a positive or negative advantage is not clear but it can be quite amusing to watch some of the Pokeman trackers walking around in circles.

Of course, we could benefit from further committee members and I would urge anyone to come along to Committee Meetings on the second Thursday of each month at 7 pm in the Rangers' lunch room. Finally, I would like to thank Margaret, Frank and Bev for their continued commitment and support to the Friends' Group

Judith Sise President

## **Help Help Help**

**The Friends are seeking help with the committee.**

**If you are interested in helping with the direction the Friends head into the future & the decisions on projects & activities then please consider joining the committee.**

**The committee meeting is held on the 2nd Thursday of each month at the Park Office Amenity block**

**Time 7:00 pm to 9:00 pm**

**Any help with the committee would be greatly appreciated.**

**If you require further information then please email the friends on [braeside-parkfriends@gmail.com](mailto:braeside-parkfriends@gmail.com)**

## Wednesdays with Ernie's 'A Team' *By Bev Bancroft, Treasurer*

### GRASSLANDS

It has rained, more to come ie rain & weeds. We have planted over 500 Themeda and Danthonia and have weeded.

### ROBIN CAR PARK

Several visits and had volunteers weeding & mulching. Over 300 trees & grasses have been planted as infill. This car park looks great.

### MELBOURNE WATER GRANTS

Along the waterway & extended areas we planted over 100 Ovata, Viminaria, Eucalyptus Camaldulensis in knee high water & also completed Carex plantings around the Caterpillar Pond which had 4 ducks on it.

### COMMUNITY GARDEN

Once again this area has been mulched, weeded & generally tidied. Many used pots have been washed in preparation for the propagation of the seedlings.

Many thanks to all those helped - a great job.



*Join in the activities with Parks Victoria Rangers  
every Wednesday from 9 am - 12 noon  
- meet at the Park Office  
- morning tea provided*

*Help is needed for a variety of jobs - everyone most welcome.*

*Wednesday afternoons continue*

## Newsletter Contributions

Thank you to Margaret, Judith, Bev & park Staff for this months contributions

If you have an item to share in future editions or have any feedback in relation to the newsletter, please contact the editor at [braesideparkfriends@gmail.com](mailto:braesideparkfriends@gmail.com)

**Deadline for November/December edition: 1 November 2016**

## Night Walk, by Margaret Hunter

### Final night walk for 2016

The Friends held their final night walk on Friday 2 September 2016, with an attendance of 20 adults and children and three guides. We started with 3 possums viewed in the visitor centre car park, that delighted the children in the group as well as a fox near the Mens shed, with many rabbits spotted by the guides and the participants.

Many of the rabbits spotted were babies, with frequent doves seen near the playground and a possum on the ground that once again decided that it was a good night for an extended walk on the ground level and finally scampered up a tree. It was a still mild night with many spotting, but sadly not a tawny frog mouth on this occasion. The sulphur crested cockatoos once again obliged with eels sighted in the dingley waterway.

The group enjoyed this activity and it has been one of the most successful of the friends activities in 2016 with over 200 people attending and special group bookings taken for scouts in addition to these monthly walks. Thanks to all the guides who have assisted in 2016 and we look forward to seeing you once again in 2017.

### AGM Report 2016

#### Annual General Meeting

The Annual General Meeting of the Friends was held at the Visitor Centre on Sunday 14 August, with a good attendance. We discussed the activities of the Friends in the last twelve months, with a guest speaker on native fish, Tim Curmi who was most interesting and informative. Thank you to all the members and friends who attended this meeting, which was followed by afternoon tea and socializing

However, we urgently need more committee members to support the work of the Friends as the current committee members are low and stretched to cover several roles. We hold our committee meetings at the park amenity centre near the office at 7.00 pm on the second Thursday of the month (8 September) and all members are welcome to attend. If you are interested in taking part in assisting on guided tours and other friends activities including propagation, planting, nursery, waterwatch and other activities please contact us on the email address [braesideparkfriends@gmail.com](mailto:braesideparkfriends@gmail.com). All enquiries welcomed.

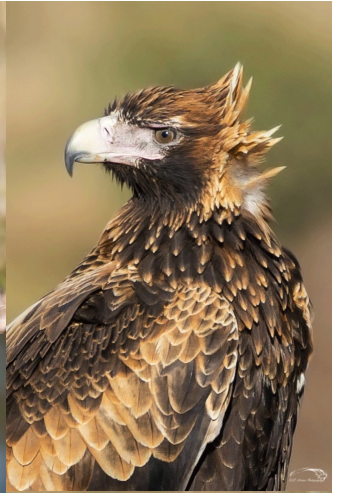
### Friends Major Project: Stump Art

Rob Bast chainsaw sculptor has returned to the park to turn one of the old Cypress stumps into a piece of art. The stump near the Men's Shed was targeted with a view of making a link to the park racing history. Rob found that this stump had been severely affected by termites and this presented many challenges for him. The stump was filled with a wood filler in a number of locations and after a few additional days of work the art work was finished.

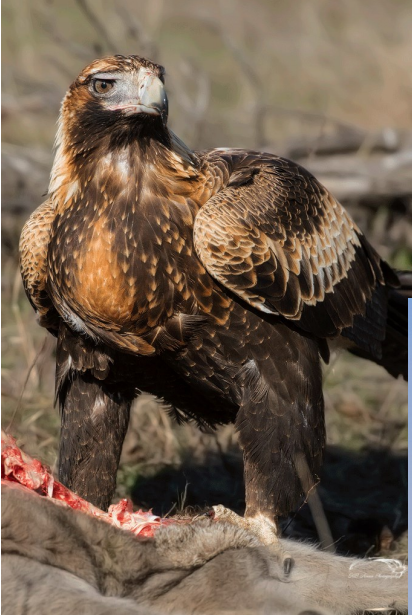
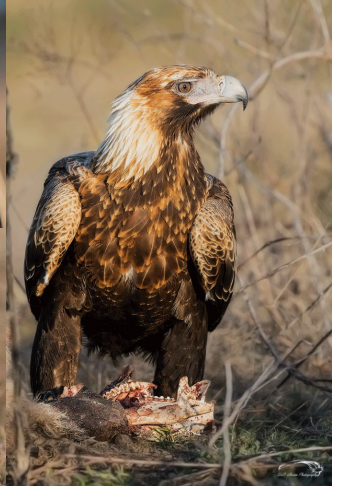
The Dingley Village Men's shed have contributed by staining the stump to ensure the wood is protected.

Thanks to everyone who has been involved.





**Photos with permission by Kim Bradley Canberra**



## The Friends of Braeside Park

### Invite you to the Spring Walk

### The Wedding Bush & other native plants are in flower

When: Sunday 16<sup>th</sup> October 2016  
1:00 - 3:30 afternoon tea supplied

Meet at the Visitor Centre after entering the park from Lower Dandenong Road

Melway Map Reference 88 - D8

What to Bring: Camera, binoculars, sturdy footwear etc

### All Welcome

For further information call the Park Office on 8427 2027 between 8:00 am & 4:00 pm

The watermark on this paper depicts the emblem of the Friends Group - The Wedding Bush (Ricinocarpos pinifolius)

## The Friends of Braeside Park

### Invite you to Breakfast with the Birds, an early morning guided walk and barbecue at Braeside Park's main Wetland

When: 18<sup>th</sup> September 2016 at 7:00 am

Where to Meet: Red Gum Picnic Area, Melway Map Reference 93 — F 1 & 2 from Governor Road Entrance

Cost: Free

What to Bring: Camera, binoculars, sturdy footwear etc

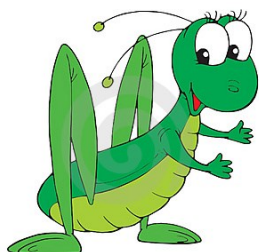
Time Activity Concludes: 9:30 am approximately

For catering purposes please RSVP and register your numbers attending by calling the Park Office by Friday 16<sup>th</sup> September 2016.

For further information call the Park Office on 8427 2027



The watermark on this paper depicts the emblem of the Friends Group - The Wedding Bush (Ricinocarpos pinifolius)



**"Bugs, butterflies and other Insects"**  
**Saturday 26<sup>th</sup> November 2016 — Braeside Park**  
3:30 – 5 pm What insects are found during the day?  
7:30 – 10 pm What insects are found during the night?

**"Bats and Nocturnal Animals Night"**  
**Saturday 12<sup>th</sup> November 2016 Braeside Park**  
8:15 Presentation on Bats and nocturnal mammals



9:00 Head off on spotlight walk, checking bat traps around 10pm, then pack up nets.

## **Bird Monitoring Program**

Are you interested in birds?

Why not join the Bird Life Australia group on the 4th Friday of each month  
See the activity calendar on the rear page for details.

So grab you binoculars, camera and favourite field guide and head down to Braeside Park!

For further information and a copy of the monitoring sheets  
please contact the park office on **8427 2027**

## Friends of Braeside Park—Activity Calendar

### Weekday Community Project-The A Team:

Every Wednesday with Ranger staff commencing at 9:00 - 12:00 from the Park Office.  
Activities can include weeding, mowing weeds, mulching, planting, fencing etc.

### Community Garden:

3rd Sunday, monthly from 9:30 to 12:00 Noon.  
A short meeting followed by various garden and nursery activities.

### Nursery - Plant Propagation:

1st Saturday and 3rd Sunday from 10:00 am to 12:00 Noon and  
Every Wednesday 1pm to 3pm  
Undertaking a variety of propagation activities.

### Committee Meeting:

2nd Thursday, monthly 7:00 to 9:00pm at the Park Office.  
The Committee meets to make decisions about the running of the group.

### Water Quality Monitoring:

3rd Tuesday, monthly 9:00 to 12:00 noon from the Park Office.  
Water samples are taken and monitored from the Dingley Waterway and Wetland.

### Bird Observations:

A set bird observation is completed monthly around the main wetland.  
Call Ranger Glen Oliphant on (03) **8427 2027** to become part of this program.

### Birds Australia Monitoring Program:

10 bird monitoring transects are monitored in this program with 5 completed one month and the  
Other 5 the next month.  
These sessions occur on the 4th Friday of each month from 8:00 am alternating between the  
following starting locations.

Park Office January, March, May, July, September, November  
Robin Car Park February, April, June, August, October, December

### Special Activities:

Night walks are offered from April through to September. Gold Coin Donation. For details and  
bookings contact the park office on **8427 2027**

**Community Nursery is Open on the Third Sunday of the Month  
10:00 am to 12:00 noon – Seedlings \$2.00 each.**

### Friends of Braeside Park Inc.

**President:** Judith Sise

**Secretary:** Margaret Hunter **Assistant Secretary:** Currently vacant

**Treasurer:** Bev Bancroft **Newsletter Editor:** Vacant **Webmaster:** Frank Russo

**Publicity Officer:** Vacant

**Postal Address:** PO Box 608 Braeside, Vic. 3195 **Phone:** (03) **8427 2027**

**Email:** braesideparkfriends@gmail.com **Web:** [www.braesideparkfriends.org.au](http://www.braesideparkfriends.org.au)

**ACN:** A 002 4027 B

Join us on Facebook

<https://www.facebook.com/groups/327955807288240/#>

Current Facebook Members = 98