



## THE FRIENDS OF BRAESIDE PARK

# NEWSLETTER

### Contents

• From the President	2
• Volunteer Recognition	3
• Farewell Des	4
• Braeside Park Bird Surveys	5
• Water Watch	6
• Parkdale Primary Night Walk	7
• Ducks on Trees	8
• Park Connect	9
• Residents	10
• FOBP Info	12
• Membership Form	13
• AGM 2022	14
• Night Walks Flyer	15
• Activity Calendar 2022	16



**Braeside Park**  
470 Lower Dandenong Road,  
Braeside 3195  
Phone: 8427 2027

**Friends of Braeside Park**  
PO Box 608



*The opinions expressed in this newsletter are the authors' and do not necessarily reflect those of Parks Victoria or its staff.*

## From the President

Des Lucas' departure has left a big hole in the communication and support between the Friends and the Braeside Park management. It will take time for the new Rangers to learn about Braeside Park and to develop a working relationship with the volunteer groups that operate in the Park.

There is a need for all groups to be patient and to assist the Rangers into their roles.

The new Rangers are as follows:

- Janelle Cadd;
- Kylie and Nic who are sharing 1 Ranger role in a part-time capacity;
- Adam who will be here until October filling in for Kelly;
- Ash who has been extended till August 2 till the role of Team Leader: Sandbelt can be filled.

Meanwhile, the Nursery is not really functioning after an initial flurry of new participants. The Wednesday A Team has done some cleaning in the Nursery and this group has begun to attract a few regulars to work from 9 till 12 around the Park. It was disappointing that the planting scheduled for World Environment Day 5 June was cancelled but hopefully, a Ranger will be available to organise a planting on National Tree Day Saturday, 30 July. Established in 1996, National Tree Day has grown into Australia's largest community tree planting and nature care event. The program is a call to action for all Australians to get their hands dirty and give back to their community. This event will be a test for Parks Victoria because it is after 30 June 2022 deadline when all volunteers must not only be certified "Working With Children" but registered with Parks Connect.

I and Margaret, who is member, attended the Karkarook Friends Group's meeting in the Visitors' Centre Saturday 11 June 2022. They are faced with their own set of challenges regarding the maintenance of the lake and mapping the numerous "informal" tracks. They do however **6 690** plants in their Nursery! Karkarook Friends have 8 Committee Members, 26 financial members and 64 interested contacts and were invited to attend our Annual General Meeting on Sunday 7 August 2022. Their AGM is the week after and will probably be held in the Braeside Park Visitors' Centre.

The June Nocturnal Walk for 28 Parkdale PS Grade 2 students and parents was a success thanks to guides, David M, David B and Rosemaree and Margaret's organisational skills – a separate report included.

**Judith Sise**

## **The Friends of Braeside Park News**

### **Parks Victoria Volunteer Recognition Day @ Werribee Park 2022**

On Saturday 21<sup>st</sup> May 2022 I, a Committee Member of Friends of Braeside Park, attended the Annual Parks Victoria Volunteer Recognition Day this year at Werribee Park.

On a beautiful sunny day it was the same day for the election as I pre voted two weeks before so I was good to go. I arrived before 9am and met with some of the volunteers that look after the Werribee Park Farmyard which is behind the Werribee Park Mansion next to a polo cross field.

The volunteers were feeding the hens. We left our fold up chairs with Parks Victoria staff and made our way with other Parks Victoria Volunteers from other Metropolitan Parks run by Parks Victoria.

We did our own tour of the Werribee Park Mansion Gardens and walked around the lake which had a baby Coot, Purple Swamp Hens and Ducks. We then saw lots of Big Bats sleeping in the three Pine trees around the lake. We then headed to the Victorian State Rose Garden and saw hundreds of varieties of roses grown there and saw some still flowering but not all.

Next to the Werribee Park Mansion on the side there is normally a Rose garden but the last four years it has been a vegetable garden for a group in Werribee to use. There is also a high plastic fence around the vegetable garden to stop the rabbits from eating the vegetables and they also have a rabbit problem in the Victorian State Rose Garden and in the Werribee Open Range Zoo like we do at Braeside Park.

We continued on to the front entrance of the Werribee Park Mansion and did our own tour inside the Werribee Park Mansion built by the Chirnsides in the 19<sup>th</sup> Century. A lot has changed since I was there a long time ago. The Mansion has one cafe, two restaurants Joseph's restaurant and the Refectory at Werribee Park Mansion and one Hotel called Lancemore Mansion.

It is \$300 a night to stay and has a day spa and an indoor swimming pool.

While we were inside the Werribee Park Mansion the fire alarm bell went off and we were evacuated outside to the front of the Mansion and waited until the all clear was given from Parks Victoria Staff that run the Werribee Park Mansion. Three fire trucks from Werribee had attended. The fire alarm bell went off in the restaurant or cafe and did not include the Lancemore Hotel Mansion.

We then left the Werribee Park Mansion and headed back to the Werribee Park farmyard for a picnic lunch supplied by Parks Victoria which included sandwiches, wraps, chocolates, biscuits, tea, coffee, juices and soft drinks. Yummy.

Parks Victoria Bernice Dowling Community Partnerships and Volunteer Coordinator talked to all the 100 volunteers that turned up and thanked them for volunteering on a Parks Victoria Estate and also another Parks Victoria Rep talked to us about the park etc. After lunch we were handed tickets to the Werribee Open Range Zoo. We drove back up to the Werribee Open Range Zoo where we embarked on a four trailer Safari Bus just for all the Parks volunteers - a forty minutes Safari tour we saw Bison, Camels, Mongolian Wild Horses, Ostriches with their White Eggs, Hippos, Cheetah, Antelopes, Rhinos, Zebras, Huge Giraffes and the Werribee River that flows though the Werribee Open Range Zoo and is the only River in the world we were told by the Safari Tour Bus Operator that runs through a Zoo.

## The Friends of Braeside Park News (cont.)

I went again with the general public on the Safari tour to see the animals from the other side of the bus trailer up close.

After arriving back from the Safari tour bus I continued walking around and seeing the Hippos up close, Lions, Vervet Monkeys, Gorilla and Meerkats next to the Meerkat bistro where you can see them inside next to the windows sleeping under a heat lamp and in their shelters.

I had run out of time to see our Australian Animals in a separate section at the Werribee Open Range Zoo which no one had told us that this section closes at 4.30pm and the zoo was still open until 5pm.

You can also stay the night at Werribee Open Range Zoo there is a separate section inside the Zoo called Slumber Safari Overnight Camp which costs \$380 per Adult Thursday and Sunday nights \$195 per Child, \$425 per Adult Friday-Saturday-Public Holidays and School Holidays.

We thank you again for a great day out courtesy of Parks Victoria and can't wait again for the next one.

**David Boldiston**

### Farewell Des!

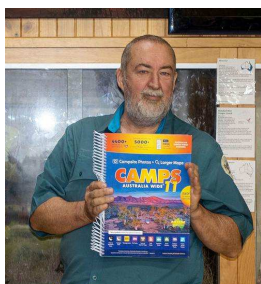
A roomful of men, a few women, in dark green shirts and boots gathered at the Visitors' Centre to farewell De Lucas on Wednesday 27 April.

Besides the Parks Victoria mob, both present and past employees, there were representatives from the Men's Shed, the Community Garden, the cattle grazier's family and The Friends. Des had over 44 years impressed many with his generosity, kindness and empathy. After the short speeches and man hugs, there was a queue of individual farewells for Des. I am not sure Des even got a cup of tea and a bit of cake! It was a farewell that spoke volumes of the regard and respect with which Des is held by all who attended. Digger leaves on May 26<sup>th</sup> - I think? It is not only the person we will miss it is the decades of Braeside Park

knowledge lost. It is a shame that that information was not passed on by some Parks Victoria's forward planning. Des is gone so who do I call when I hear the alarm ringing at 5:15

am or when a cow takes an early morning stroll? Darren Mitchell will be nominally in charge till the new crew settle in but there will be no leader until October. Regrettably, for the next few months Braeside Park will be in stasis at best, without the skills and leadership of an experienced Ranger. However, the local community can enjoy the fact that the Victorian Government can provide road crews to work on Lower Dandenong Road. Let's all be thankful that Braeside Park is not a future National Park, like the lucky State Forest which the tax-funded VicForest are presently raiding.

**Judith Sise**





## Park Activity

### Braeside Park Bird Surveys

In April, 2022, we farewelled Des Lucas, thanking him for his generous help in liaising with us on our surveys and always showing great interest in our results. We wish him well in his retirement and hope he gets much joy from his home-building activities and big travel plans. We met, and welcomed, Janelle Cadd who has returned to Braeside as part of the new Ranger team, and has become our new contract person.

In April, we covered all 10 of our survey sites, in two teams. The Woodland circuit team started as usual in the regeneration area on the NW boundary of the Park. The area was replanted (prior to 2016) with eucalypts, wattles and casuarinas which have grown well and now provide good habitat for small birds. We had a lovely male Golden Whistler, a pair of Willie Wagtails, numerous Brown Thornbills and several Grey Fantails. Our other woodland survey areas tend to have big, old Red River Gums with very little low cover and are overrun with Noisy Miners but we did also have good sightings of Eastern Rosellas, Red-Rumped Parrots, Rainbow Lorikeets and Sulphur-crested Cockatoos. The Tawny Frogmouth family which breed in our southernmost plot had split up with the two adults roosting together in their usual gum tree and this year's youngster now alone in a casuarina some 70ms away.

The big highlight of the Heathland circuit was an Australian Hobby, perched high in a dead gum and photographed by David MacLean. Our previous sightings on the survey, of this species, were both over the woodlands, in January, 2016 and February, 2021. It's great to have another record of this fast-flying, bird-catching small raptor in the Park. Large numbers of both Little and Red Wattlebirds were found in the Heathlands, thanks to the vigorous flowering of the Coastal Banksia which is a rich source of nectar and pollen for them. Two Flame Robins were also recorded, probably reflecting the autumnal migration of this species from the cold south, e.g., Tasmania, or cold uplands of the Great Divide, to warmer coastal lowlands.



In May, 2022, we only had enough participants to do one circuit and we chose to do the Heathlands. Wattlebird numbers were right down (?less blossom) but we did have both White-plumed and New Holland Honeyeaters as well. Five Kookaburras were noisily chasing each other; we heard both Eastern Yellow Robin and Eastern Spinebill and a Black-faced Cuckoo-shrike sat high in its usual dead gum. Most fascinating was the number of Pardalotes, both Spotted and Striated, that were both seen and heard in each of the plots. A pair of Striated Pardalotes were photographed by Ian Morehouse repeatedly going into, and out of, a small tree hollow, high in an old gum stag - showing interest in a potential breeding site. We also had two, big (20+ and 50+), loose flocks of pardalotes flying over different plots. They didn't call while flying and may have been mixtures of both species.

## Park Activity

### Braeside Park Bird Surveys

Outside our survey areas, we had an Australasian Grebe on the small pond adjacent to the Heathland boundary fence and a single Tawny Frogmouth in a tree, not far from the tree a pair successfully raised young in, earlier this year, but we didn't find the rest of the family.

**Pat Bingham**

### Water Watch results Sunday 12 June 12/6/22

Overcast, scattered showers, cold.

**Macroinvertebrates Survey of Wetlands** was poor with tens of Water Boatmen and Backswimmers and around 15 Shrimps and just a few leeches.

	Bent Bridge	Sherry Bridge	Dingley Drain	Wetlands
Temperature				
Air	9	9	10	9
Water	11	10	12	10
pH	6.7	6.2	6.8	7.2
E.C.	300	550	140	500
Turbidity	70	67	50	38
Ammonium	0.00	0.02	0.00	0.04
Phosphorus	0.55	0.32	0.26	0.42
Oxygen	6.7	8.7	9.6	8.9



**Judith Sise**

## Park Activity

### Parkdale Primary Night Walk (June)

After hosting a group of school children and parents from Parkdale Primary for a night walk, we received the following beautiful letter.

*Hi David and Margaret,*

*On Friday 3rd June, together our friends set off on an adventure in the dark! We loved running around with our torches looking for night creatures. We tried to be quiet but we were having too much fun!*

*We saw bunnies, a fox, ringtail possums, brush tail possums, some birds sleeping and half the group were lucky enough to see a tawny frogmouth!!*

*The red lights were pretty cool to have a go of. Thankyou David, Judith, Rosemary and David for taking us on our adventure! This is what some of my friends said about the fun they had:*

*"I liked seeing all the*

*possums. I also liked seeing the cute bunnies."*

*"What I liked about the night walk the most was seeing all the interesting birds."*

*"I loved running around in the dark with my friends and our torches!"*

*For some of the parents it was a nostalgic occasion, as they had done the same night walk 30 or so years ago!*

*Thanks for having us!!! And thanks Margaret for all the behind the scenes organisation.*

*-Zara, Parkdale Primary School.*

**The fact that some of the parents had done the same night walk 30 years ago is wonderful. To be able to span the ages and generations with our night walks gives the Friends a sense of service that cannot easily be described. I for one, feel very proud of being a member of Friends of Braeside Park.**

### Night Walk (July)

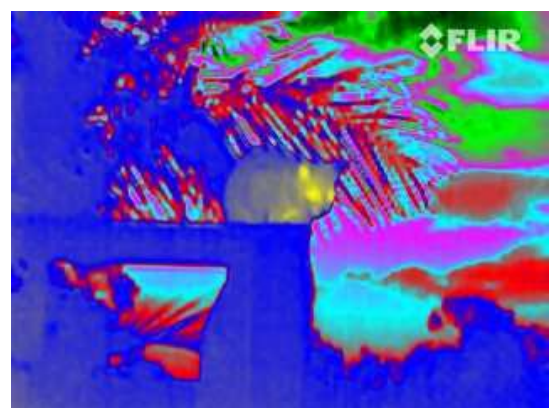
Email from class rep Kate Pask received by Friends of Braeside Park:

*"Wow, how fun was that! Thank-you so very much for organizing this evening's night walk. We all had such a great time. It's a really, lovely way of having an outdoor walk, fresh night air, the adventure of what we might find, and so fun for the kids spending time together out of school hours, which they haven't had a lot over the last 2 years! The kids are going to write a little blurb for your newsletter too."*

**To help find nocturnal creatures, The Friends have**



**purchased a FLIR nightscope which can be used to see in the infrared spectrum and convert to one of several colour pallets.**





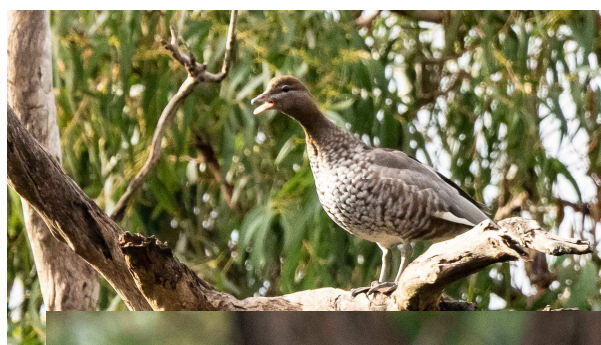
## Park Activity

### Ducks on Trees

On a cold Friday morning, a small group of people gathered near the Ranger's Office getting ready to start the monthly bird survey.



One of the rangers made the casual statement that there had been a number of sightings of ducks on



trees.

Strange as you would expect them in the waterways rather than in the woodlands perching on trees.

As the morning developed and we walked through the heathlands, I spotted one very noisy female duck on a tree.

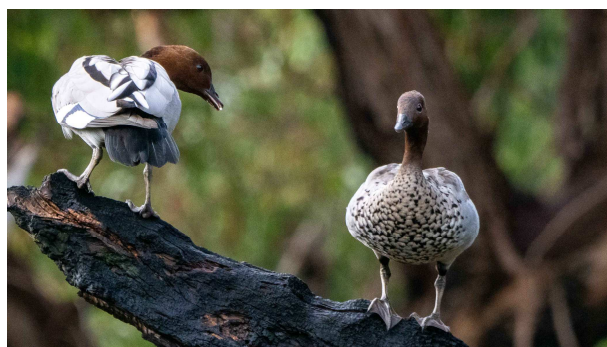


During the next hour, she kept cropping up.

Sometimes quacking, barking, singing and sometimes with male company.



All ducks are pretty, but this one was extraordinary. She also had a beautiful singing voice - as testified by a number of male ducks looking for her attention. She was serious. She could dance, sing and her feathers were ordered and shining.



Finally, one male seemed to make the connection. You could just see her thinking "maybe you will do just fine...."



**David MacLean**

## Park Activity

### Park Connect

Dear reader, during the last few months there has been a gradual ramping up of all park activities being hosted on the Parks Vic connect website.

In most cases the Friends have done in the background what is required for activities to progress.

Last week, the current Head Ranger stated that in the future (After the 30th of June 2022) all volunteers would need to have a current Working With Children Check. This will be mandatory going forward.

Following is an extract provided by Ash Golledge (Ranger Team Leader, Sandbelt):

## Volunteering Update - Working with Children Check

All organisations in Victoria that provide services or facilities for children are required to comply with Child Safe Standards.

To comply with these Standards, Parks Victoria now requires all volunteers that operate on the parks estate to hold a valid Working with Children Check (WWCC) by 30 June 2022.

Working with Children Checks are FREE for volunteers to obtain.

Parks Victoria is implementing the WWCC requirements because:

- Parks Victoria is required to act in accordance with the Victoria Child Safe Standards, and must act to prevent all forms of abuse and harm to children, including by ensuring that all employees and volunteers who operate in our Parks are suitable to work around children
- Young people are increasingly being encouraged to visit and experience parks
- Many young people are seeking volunteering opportunities
- An increasing number of volunteer groups are actively engaging young people in their activities to promote knowledge transfer and successful succession planning
- Volunteer activities are encouraging engagement of the broader family group including children
- Volunteers working in parks have a public facing role that can result in contact with young people
- Many parks have shared public facilities
- Child safety incidents have occurred and continue to occur within our parks
- There are volunteers who have failed their WWCC and are therefore unsuitable for volunteering at Parks Victoria
- Parks Victoria is dedicated to providing a child safe environment

Volunteers who do not hold a WWCC will no longer be able to volunteer on Parks estate after 30 June 2022. A record of proof that a WWCC has been obtained must be uploaded onto Parks Victoria's online volunteer portal ParkConnect.

For Volunteer Groups, Parks Victoria staff will not be able to approve volunteer activities with active volunteer members that have not obtained a valid WWCC.



## Park Activity

### Park Connect

The working with Children Check will apply to all groups that volunteer in the Park. It however does not apply to a private group of people having a picnic or going for a walk.

The Park Connect website is easy to navigate and can be used initially to register your profile and then to add your accreditations.

<https://www.parkconnect.vic.gov.au/>

The volunteer Working With Children Check is free and easy to obtain. Use the following url:

<https://service.vic.gov.au/services/working-with-children>

As we will all be going through this transition together, it is important to be patient and to reach out to the Rangers or to Friends for help if required.

Technology can be unforgiving and difficult (try and get the full stop in the wrong place and see how much chaos you get), but it can also be wonderful and friendly (ask Siri for directions or help with finding your keys). It is what we make of it. **So, lets make it work for us.**

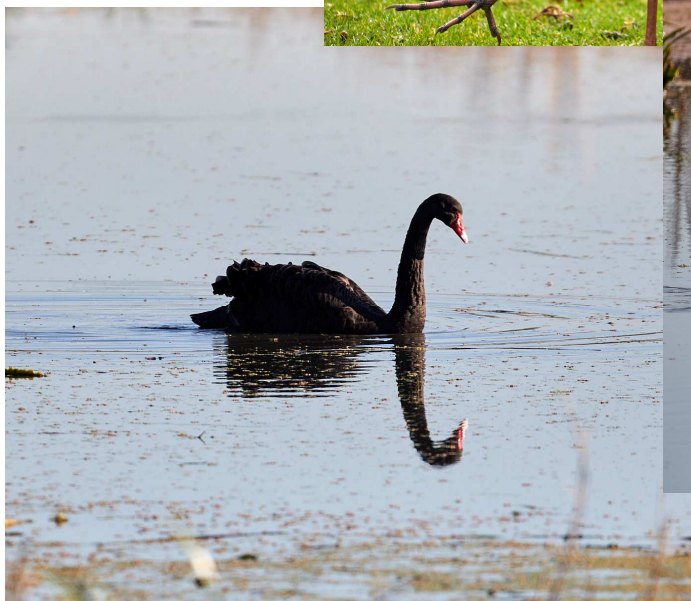
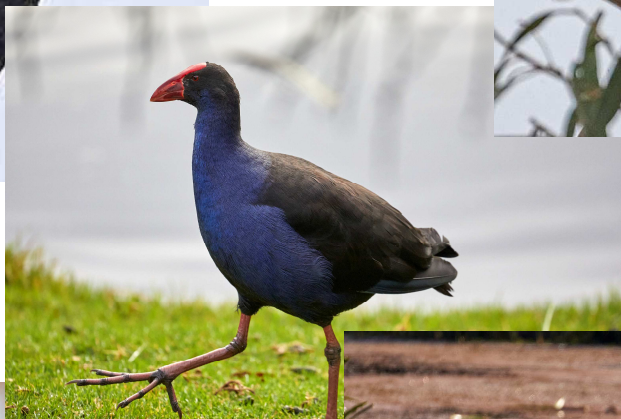
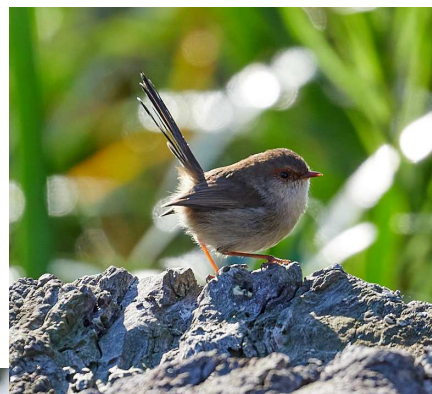
**David MacLean**

## Residents of the Park



**Photos by David MacLean**

## Residents of the Park



Photos by Ian Morehouse



## Editor's Note

2022 still promises to be an interesting year.

New rules and regulations (Working with Children Check and Park Connect) will require some changes from the Friends and all volunteers.

In preparation for some of this newfangled technology, the Friends have obtained a new iPad to help with electronic administration.

The rangers have kindly donated 3 Infrared/red LED torches to assist with our night walks. Also the Friends have purchased an infrared monocular that can see heat signatures in total darkness. This device will be very useful for spotting animals and birds during our night walks as well as for any emergency search for lost persons.

**David MacLean**  
[de\\_edfobp@inet.net.au](mailto:de_edfobp@inet.net.au)

## Friends of Braeside Park Inc.

<b>President:</b>	Judith Sise
<b>Secretary:</b>	Margaret Hunter
<b>Assistant Secretary:</b>	Rosemaree MacLean
<b>Treasurer:</b>	Helen Russo
<b>Newsletter Editor:</b>	David MacLean
<b>Webmaster:</b>	Frank Russo
<b>Publicity Officer:</b>	Vacant



**FOBP Committee**

Frank Russo, Judith Sise, Helen Russo, Rosemaree MacLean,  
David MacLean, Margaret Hunter, David Boldiston

<b>Postal Address:</b>	PO Box 608 Braeside, Vic. 3195
<b>Phone:</b>	0417 323 460
<b>Email:</b>	<a href="mailto:braesideparkfriends@gmail.com">braesideparkfriends@gmail.com</a>
<b>Web:</b>	<a href="http://www.braesideparkfriends.org.au">www.braesideparkfriends.org.au</a>
<b>ACN:</b>	A 002 4027 B

Join us on Facebook <https://www.facebook.com/groups/327955807288240/#>

## Newsletter Contributions

Thank you to Judith Sise, Margaret Hunter, David Boldiston, Pat Bingham, Ian Morehouse and David MacLean for their contributions to this edition.

We thank the many contributors to our Facebook page for their excellent photos and stories.

If you have an item to share in future editions or have any feedback

in relation to this newsletter, please contact the editor at

[de\\_edfobp@inet.net.au](mailto:de_edfobp@inet.net.au)  
or [braesideparkfriends@gmail.com](mailto:braesideparkfriends@gmail.com)

**Friends of Braeside Park**  
**ABN 72 959 503 118 INC NO A00242027B**

**Membership Renewal/Application Form:**

I/We wish to become/renew our membership of the FRIENDS OF BRAESIDE PARK INC  
(No joining fee)

Membership types:

Corporate	\$20
Family	\$15
Ordinary Member	\$10
Student Member	\$5
Organisation Member	\$15
Concession/Pensioner	\$5

DONATION: \$.....

**Personal Details**

Name: \_\_\_\_\_  
Address: \_\_\_\_\_  
\_\_\_\_\_  
Phone Number: \_\_\_\_\_  
Email address: \_\_\_\_\_  
Interests: \_\_\_\_\_  
Membership Type: \_\_\_\_\_ Paid: \_\_\_\_\_

Payments can be made into our Bendigo bank account –

BSB: 633 000

Account: 155348246 Include family name in description

Then mail or email this form to either of the following:

Mail to: The Treasurer, Friends of Braeside Park. PO Box 608,  
Braeside Victoria 3195

Or Email to: [braesideparkfriends@gmail.com](mailto:braesideparkfriends@gmail.com)

Further information on the Friends' activities are available on our website and our Facebook page.

<http://www.braesideparkfriends.org.au>

<https://www.facebook.com/groups/327955807288240>

Secretary contact number 0417 323 460

Friends of Braeside Park Renewal Membership form November 2021



**Friends of Braeside Park**

**ABN: 72 959 503 118 INC NO: A00242027B**

## **2022 ANNUAL GENERAL MEETING**

**EVERYONE WELCOME**

**Where: Braeside Park Visitor's Centre**

**When: Sunday the 7<sup>th</sup> August 2022**

**Times: Registration at 2:00pm, AGM Meeting at 2:10pm**

**Presentation at 3:00pm by our Guest Speaker(s)**

**Afternoon Tea from 3:00pm**

**Everyone welcome and concludes at 4:00pm**

**Enquiries/Further information contact**

**Margaret Hunter, Secretary on 0417 323 460**

**Website: [www.braesideparkfriends.org.au](http://www.braesideparkfriends.org.au)**



# Night Walks for 2022



Friends of Braeside Park

**The Friends of Braeside Park invite you to  
attend a night walk to view nocturnal  
animals of the park**

**On Friday Nights at 7pm from April through  
to September**

**~~8<sup>th</sup> April, 6<sup>th</sup> May, 3<sup>rd</sup> June, 1<sup>st</sup> July,~~ 5<sup>th</sup> August and  
2<sup>nd</sup> September**

**Meet at Visitors Centre  
Braeside Park**

**Enter at Lower Dandenong Rd entrance**

**Cost: Gold Coin Donation per person**

**Numbers Limited – Bookings are Essential**

Via email: [braesideparkfriends@gmail.com](mailto:braesideparkfriends@gmail.com) or Contact Margaret Hunter on 0417 323 460

Visit [www.braesideparkfriends.org.au](http://www.braesideparkfriends.org.au) for more info

## Friends of Braeside Park Activity Calendar 2022

Activity	Time/Day	Jan	Feb	Mar	Apr	May	Jun	Jul	Aug	Sep	Oct	Nov	Dec
Committee Meeting	7pm - 9pm 2nd Thursday at the Visitor's Centre	*	10	10	14	12	9	14	11	8	13	10	8
Community Projects Weekday - "The A Team"	9am - 12pm Wednesday's at the Park Office	*	2 9 16 23	2 9 16 23 30	6 13 20 27	4 11 18 25	1 8 15 22 29	6 13 20 27	3 10 17 24 31	7 14 21 28	5 12 19 26	2 9 16 23	7 14 * *
Nursery open for plant sales	10am - 12pm 3rd Sunday	*	20	20	17	15	19	17	21	18	16	20	18
Plant Propagation Community Nursery	10am - 12pm 1st Saturday & 3rd Sunday	*	5 20	5 20	2 *	7 22	4 19	2 17	6 21	3 18	1 16	5 20	3 18
Community Waterview Program	9:30am - 12pm 2nd Sunday Visitors Centre	*	12	12	9	14	11	9	13	10	8	12	10
Bird Observations	8am - 11am 4th Friday Park Office	28	25	25	29	27	24	22	26	23	28	25	23
Nightwalks	From Visitor's Centre 7pm	Nightwalks offered from April through to September. Gold Coin Donation per head Bookings Essential 0417323460				8	6	3	1	5	2	Nightwalks offered from April through to September. Gold Coin Donation per head Bookings Essential 0417323460	
Community Projects Weekends	9am - 12pm, follow the signs	*	*	*	*	*	*	*	National Tree Planting Day Saturday 28th	*	*	*	*
Special Activities are held throughout the year at various times		*	*	Clean Up Australia Day Sunday 6th Meet at Visitor Centre 10am - 12pm Volunteer Information Session, Sat 19 2pm	Mystery Walk Saturday 16 12:30 - 3:30 with afternoon tea	*	*	*	AGM Sunday 7th 2pm-4pm with afternoon tea	Breakfast with birds Sunday 18th Red Gum Picnic Area 7am - 9:30am	Spring Walk Sunday 16th 1pm - 3:30pm	*	End of Year BBO Wednesday 14th

Website [www.braesideparkfriends.org.au](http://www.braesideparkfriends.org.au)

Email [braesideparkfriends@gmail.com](mailto:braesideparkfriends@gmail.com)