



THE FRIENDS OF BRAESIDE PARK NEWSLETTER

Contents

Presidents Report	2
Nocturnal Program	3
Community Garden Open day	3
Park Activities	4
Activity Calendar	6
Residents of Braeside Park	7
Information	8
National Tree Day	9
Night Walks	10
Activity Calendar	11

AGM Notification
Sunday 12th August 2018
2:00pm
At the Braeside Park Visitor Centre



Braeside Park
470 Lower Dandenong Road,
Braeside 3195
Melway Map 88 D8
Phone: 8427 2027

The Friends are seeking to reduce postage costs.
If you would like your newsletters emailed then
please send your email details to
braesideparkfriends@gmail.com



The opinions expressed in this newsletter are the authors' and do not necessarily reflect those of Parks Victoria or its staff.

President's Report

By Judith Sise

'The Year that Made Me' is a programme on ABC Radio National. As I drove to a meeting of the Victorian Field Naturalists I listened to Christine Milne, former Australian Greens' Leader and Senator for Tasmania.

She was recounting her early environmental protests. Christine, like most of her generation, was first alerted about the need to protect the environment when Lake Pedder was drowned. She did not really think that the Tasmanian Government of that Day would actually go ahead with it! Next, when visiting Germany's Black Forest, she saw it dying from acid rain and hoped that this would not happen back in Tasmania. Back home, she settled back to teaching. Then, Noranda and Broken Hill Proprietary decided to build a paper pulp mill at Wesley Vale. That was her parents' farm's neighbourhood. Christine contacted conservation groups. They were all busy fighting other battles and said that it was up to the locals.

She remembers putting down the phone disappointed and a bit annoyed. It struck her that if she wanted to save her backyard then it was up to her and other locals. So, she organised a meeting of the local farmers and began an 18-month campaign which generated national and worldwide interest. Noranda and North Broken Hill cancelled their plans. Christine says that campaign in the late 1980's was tough. "A lot of death threats at that time, there was a lot of violence. I don't think people, looking back, realise just how difficult it was - but it was worth it."

"Wesley Vale, the farmers, began the whole idea of Tasmania clean, green and clever."

That campaign was thirty years ago. Do you think that its lessons have been learnt?

Fast-tracked processes, bad information, poor science, huge PR campaigns all still happen through governments' processes. I wonder if the Mordialloc Freeway is not Dingley's call? It is easy to bow to the alleged inevitability of more roads. Generally Australians do not like disturbance, and seem a very reluctant to take any action. Take the phasing out of plastic bags at supermarkets.

As I shopped, the Check-Out Lady commented on the snarling of angry customers missing a "plastic bag" for one or two items. She was rather annoyed that the other supermarket had caved in and is providing plastic bags for a more limited time!

So next time you are in Dingley Village's supermarket, NOT offering "plastic bags", take time to say thank you to staff and ask when the plastic will be removed from other products? Removing plastic bags may also help the litter problem in Braeside Park – just one less thing to pick up!

Friends of Braeside Park's Annual General Meeting

The Annual General Meeting of the Friends of Braeside Park will be held at the Visitors' Centre on 12th August 2018 at 2.00 pm. Final arrangements for the Guest Speaker are being finalized.

All are welcome and encouraged to attend.

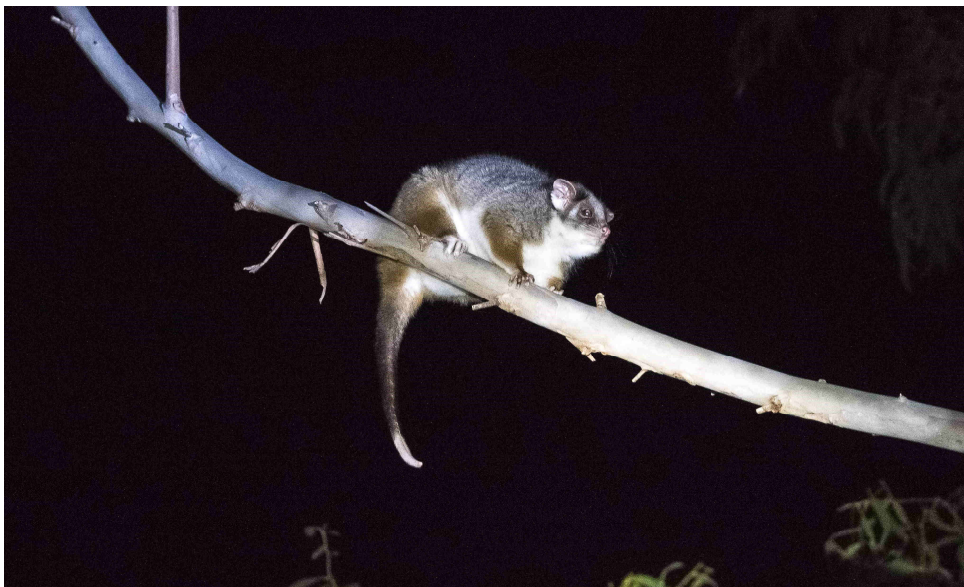
Judith Sise and Margaret Hunter

Nocturnal Program 2018

Our fabulous Night Walk Program will run until the start of Daylight Saving. Upcoming walks are on 6th July (limited spots), 13th July, both in the school holidays, 3rd August and 7th September.

We leave from the **Visitors' Centre's Car Park** at 7 pm sharp. Walkers need to wear appropriate warm clothing and enclosed, sturdy footwear. Participants need to book with Margaret Hunter, Secretary of Friends of Braeside Park, using the email address from this newsletter, or by phoning 0417 323 460. The Walks, of one and half hour duration, are a wonderful experience to view the Park's nocturnal animals, such as possums, rabbits and Tawny Frogmouths. Bookings are essential and fill quite quickly. For further information regarding the Nocturnal Walks or for arranging Group Walks, please contact Margaret. Members who want to become volunteer guides please let Margaret know.

Judith Sise



Community Garden Open Day 20 May 2018

The Friends' of Braeside Park ran a very successful Community Garden Open Day on 20th May with a walk to the wetlands, nursery activities, propagation and plant sales and a welcome BBQ to meet members of the Friends' Group.

We were able to introduce the local community to the work undertaken in the Braeside Park Nursery, to see the facilities, and with a view to become a volunteer in this area. A Welcome BBQ ran capably by David and Frank provided hot sausages for around 60 people who attended.

The Friends of Braeside Park's Calendar of activities are advertised at the back of this newsletter.

Margaret Hunter

Park Activities

Annual Mystery Walk

On Sunday 24th June, Ranger Des Lucas directed eight enthusiastic people on a circuitous route through Braeside Park. So, what did we learn and see? Des first pointed out the new Parks Victoria signage and the Mordialloc Freeway's future path through the Rangers' lunchroom! And, I have finally ascended Mount Braeside – a full 8 metres above sea level. I am not going to tell you the location of this celebrated mountain. You have to attend a Mystery Walk to find out.

We visited Phar Lap's swimming hole where a few Black Pacific Ducks were dabbling, watched by four Wood Ducks. Many ancient River Red Gums, aged between 400-800 years, were skirted by all once Des pointed out their habit of dropping branches during dry summer days. We viewed stark silvery tree skeletons which traced the path



of salinity in the Park. Re-vegetation has pushed the salinity level virtually from ground level to four and half metres below the surface. We found our path scattered with minute red fungi, round Earth Star Fungi, sundews and indigenous grasses such as dianthus.



Park Activities (cont.)

Des showed us the ringbarked stems of immature Silver Acacia and the snapped off branches of seedling *Allocasuarina littoralis*, testimony of those pesky rabbits. He pointed out an invasive plant clogging a creek. Cuttings were probably washed in from the Dingley Drain. Having walked 4.5 km at a rate of 2.5 km/hour, we left at 12:35 pm and returned to the Rangers' lunchroom at 2:50 pm to gratefully tuck into freshly baked slices, chocolate cherry cupcakes and hot tea. The weather forecast caused many walkers to cancel at the last minute but the day proved windless and slightly cool, with an overcast sky – absolutely perfect for a winter walk in wonderful Braeside Park.



Judith Sise

Historical Snippets on Braeside Park

The Mystery Walk led by Ranger Des on 24th June viewed the famous Racecourse Dam used by racehorses. Harry Telford had a training lease in what later was to become Braeside Park. Phar Lap, we believe was trained here, and the Friends' Group are currently researching and reviewing how to best restore this racecourse area. The next step to advance this project requires interested volunteers forming a small sub-committee. If you are interested please contact the Friends of Braeside Park or Des Lucas for further information. You can also visit Phar Lap at the Melbourne Museum.

Margaret Hunter

ERNIE'S "A" TEAM - WEDNESDAYS:

Good News !!!

Our application to Melbourne Water to continue Rehabilitation of the Dingley Waterway has been approved. The Catchment Management Authority Grant will continue to fund the maintenance & planting of our Grassland project.

GRASSLANDS

We continue to weed around plants. The rabbit proof fence has been checked for break ins & strengthened around the perimeter of the area.

We have planted 600 + grasses – including *Themeda*, *Danthonia* and *Poa* in selected bare areas.

Coming season looks good – Choc. Lillies, *Pimelia*, Sun Orchids etc are starting to show their new growth, so hope the same for our Orchids.

PROPAGATION

Had a couple of visits for general maintenance, pruning of grasses etc. Destruction of rabbit warrens and a rebuild of the fence line.

Bev Bancroft

Park Activities (cont.)

MULCHING/ GUARDS & FRAMES

Mulching and the removal of tree guards has continued in car parks & other 2 million tree sites.

More Volunteers are needed.

Please come & join us.

Bev Bancroft

Friends of Braeside Park—Activity Calendar

Weekday Community Project-The A Team:

Every Wednesday with Ranger staff commencing at 9:00 - 12:00 from the Park Office. Activities can include weeding, mowing weeds, mulching, planting, fencing etc.

Nursery - Plant Propagation:

1st Saturday and 3rd Sunday from 10:00 am to 12:00 Noon and

Every Wednesday 1pm to 3pm

Undertaking a variety of propagation activities.

Committee Meeting:

2nd Thursday, monthly 7:00 to 9:00pm at the Park Office.

The Committee meets to make decisions about the running of the group.

Water Quality Monitoring:

3rd Tuesday, monthly 9:00 to 12:00 noon from the Park Office.

Water samples are taken and monitored from the Dingley Waterway and Wetland.

Bird Observations:

A set bird observation is completed monthly around the main wetland.

Call Ranger Janelle Cadd on (03) **8427 2027** to become part of this program.

Birds Australia Monitoring Program:

10 bird monitoring transects are monitored in this program with 5 completed one month and the other 5 the next month.

The sessions occur on the 4th Friday of each month from 8:00 am alternating between the following starting locations.

Park Office January, March, May, July, September, November

Robin Car Park February, April, June, August, October, December

Special Activities:

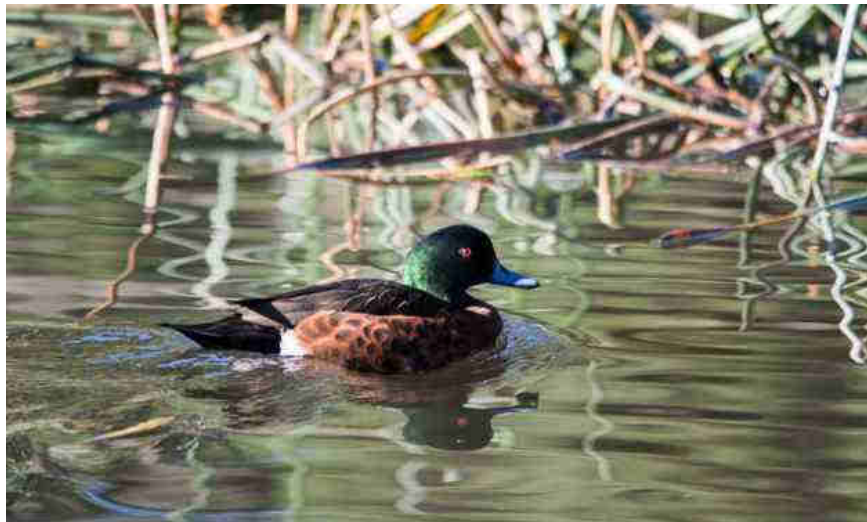
Night walks are offered from April through to September. Gold Coin Donation.

For details and bookings phone **0417 323 460**

Community Nursery is Open on the Third Sunday of the Month

10:00 am to 12:00 noon – Seedlings \$2.00 each.

Residents of Braeside Park



Newsletter Contributions

Thank you to Judith Sise, Margaret Hunter, Bev Bancroft, Frank Russo, Rosemaree MacLean, David MacLean & Park Staff for contributions to this edition.

If you have an item to share in future editions or have any feedback in relation to the newsletter, please contact the editor at

braesideparkfriends@gmail.com

Friends of Braeside Park Inc.

President: Judith Sise **Secretary:** Margaret Hunter
Assistant Secretary: Rosemaree MacLean **Treasurer:** Bev Bancroft
Newsletter Editor: David MacLean **Webmaster:** Frank Russo
Publicity Officer: Vacant

Postal Address: PO Box 608 Braeside, Vic. 3195 **Phone:** 0417 323 460

Email: braesideparkfriends@gmail.com

Web: www.braesideparkfriends.org.au

ACN: A 002 4027 B

Join us on Facebook

<https://www.facebook.com/groups/327955807288240/#>

Current Facebook Members = 118

National Tree Day

The Friends of Braeside Park

are appealing for your help with a revegetation planting day to coincide with National Tree Day.

When: 9:00 till 12:00 noon.

Saturday 28th July 2018

Look for the directional signs when entering the park from Lower Dandenong Road Braeside – Dingley. Melway 88 – C8.

Tools are supplied but please bring gloves, a drink and wear sturdy footwear. No previous experience is necessary.

**For further information call the
Parks Office on 8427 2027**

Night Walks for 2018



Friends of
Braeside Park

**The Friends of Braeside Park invite
you to attend a night walk to view
nocturnal animals of the park**

**On Friday Nights at 7pm
from April thru to September in 2018
on the 6th April, 4th May, 1st June,
6th July, 3rd August & 7th September**

Meet at Visitors Centre

**Braeside Park, Lower Dandenong Rd, Braeside
Melways Map 88 Reference D8**

Cost: Gold Coin Donation per person

Numbers Limited - Bookings Essential

**Via email: braesideparkfriends@gmail.com
or contact Margaret Hunter on 0417323460**

www.braesideparkfriends.org.au for more info

Friends of Braeside Park Activity Calendar 2018

Activity	Time/Day	Jan	Feb	Mar	Apr	May	Jun	Jul	Aug	Sep	Oct	Nov	Dec
Committee Meeting	7pm - 9pm 2nd Thursday at the Park Office	X	8	8	12	10	14	12	9	13	11	8	13
Community Projects Weekday - "The A Team"	8am - 12pm Wednesday's at the Park Office	-	7 14 21 28	7 14 21 28	4 11 18 25	2 9 16 23 30	6 13 20 27	4 11 18 25	1 8 15 22 29	5 12 19 26	3 10 17 24 31	7 14 21 28	5 12
Nursery open for plant sales	10am - 12pm 3rd Sunday	21	18	18	15	20	17	15	19	16	21	18	16
Plant Propagation Community Nursery	10am - 12pm 1st Saturday & 3rd Sunday	6 21	3 18	3 18	7 22	5 20	2 17	7 22	4 19	1 16	6 21	3 18	1 16
Plant Propagation Community Nursery	Wednesday's 1pm- 3pm Rev 9551 4578	X	X	X	X	X	X	X	X	X	X	X	X
Water Quality Monitoring Meet at the Park Office	8am - 12pm 3rd Tuesday	16	20	20	17	15	19	17	21	18	16	20	18
Bird Observations	8am - 11am 4th Friday Park Office	26	*	23	*	25	*	27	*	28	*	26	*
Bird Observations	8am - 11am 4th Friday Robin Car Park	*	23	*	27	*	22	*	24	*	26	*	14
Nighthawks	From Visitor's Centre 7pm	Nighthawks offered from April through to September. Gold Coin Donation per head Bookings Essential 0477323400											
Community Projects Weekends	8am - 12pm, follow the signs				6	4	1	6	3	7			
Special Activities are held throughout the year at various times				Clear Up Australia Day Sunday 4th Meet at Visitor Centre 10am - 12pm		Community Nursery Day 10am -12pm Sunday 6th	World Environment Day Tree Planting Sunday 3rd	National Tree Planting Day Saturday 28th	AGM Sunday 12th 2pm-4pm	Breakfast with Birds 23rd Meet at Red Gum Plunge Area 7am - 9:30am	Spring Walk - Hestland & Grasslands Sunday 14th 1pm - 3:30pm		End of Year BBQ Wednesday 12th