



# THE FRIENDS OF BRAESIDE PARK NEWSLETTER



## Braeside Park

Lower Dandenong Road,  
Braeside 3195  
Melway Map 88 D8

## Contents

'A Team' Activities	2
Seniors Walk	3
Friends Trip to Walhalla	4
Message from the Editor	5
Fire at Wye River & Separation Creek	7
The First Flower Grown in Space	8
Bird Monitoring Program	8
Night Activity Program	9
Park Report	10
Bird Report	11
Activity Calendar	12

*The opinions expressed in this newsletter are the authors' and do not necessarily reflect those of Parks Victoria or its staff.*

Printed by Parks Victoria, Braeside Park



## **Wednesdays with Ernie's 'A Team'**

*By Bev Bancroft, Treasurer*

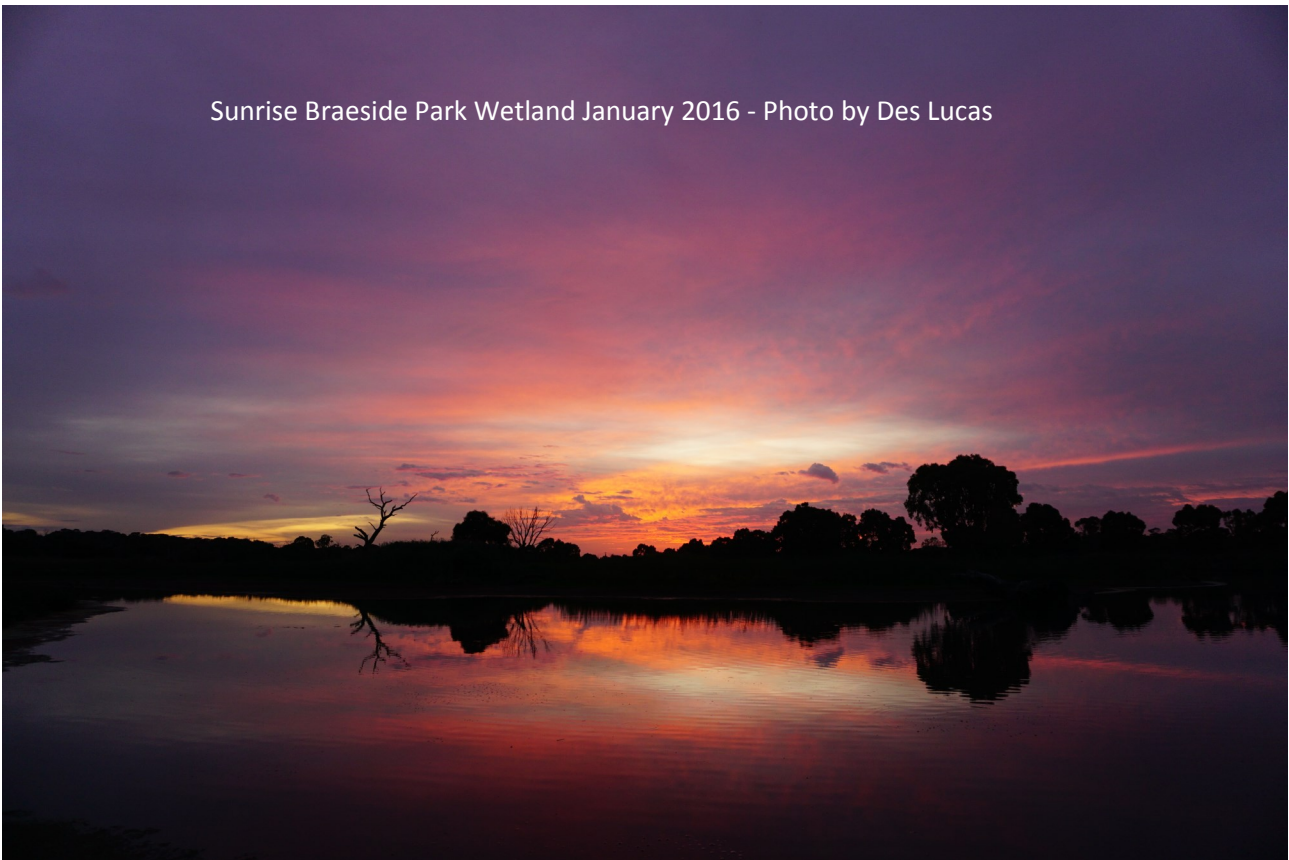
The "A" team has had a 6 week break - Back in business 3rd February, 2016.

This year we will be focusing on the Melbourne Water Dingley Water Way Grant and our Grassland Grant, both which have been approved.

The Community Garden & Visitors' Centre will be maintained with lots of weeding & planting.

Please meet at Park Office Lunch Room.

Sunrise Braeside Park Wetland January 2016 - Photo by Des Lucas



### **Newsletter Contributions**

Thank you to Margaret Hunter, Frank Russo and park Staff for contributing to the January/February newsletter.

If you have an item to share in future editions of our newsletter or have any feedback in relation to the newsletter, please contact the editor at

[harmonyfreya@gmail.com](mailto:harmonyfreya@gmail.com)

**Deadline for March/April edition: 29th February 2016**

*Earlier submissions appreciated.*





## Seniors Walk

*By Margaret Hunter*

Every October the Friends group organises a walk around the park for seniors in the Kingston community as part of the month-long senior's celebrations. Braeside Park is a popular destination for walkers at this time, and the friends, with the assistance of Des Lucas (Team Leader, Parks Victoria) provide an opportunity for people to experience the park through a walk to areas not normally accessed.

We started from the visitor centre, with an introduction about the park, and visited the Howard Road trail, the Dingley Village men's shed area and the federation trail. Many wanted to stop and play chess, but we ventured on into the Howard Road area of the park to observe the growth rates of the re-vegetation in that area, and see the damage that the rabbits have done to the park in this area.

After morning tea we went into the heathland and visited the Dingley waterway, noticing revegetation project, an old tree (the oldest in the park), where a photo was taken see left of page, and phar laps race-course trail. The group appreciated the information given on this walk and the opportunity to learn about the friends activities in the park, with some interested in other friend's activities.

Thanks to Des Lucas for being available to lead this walk, which ended on the playground with the usual end to Des's walks, always a surprise for those not in the know.



***Join in the activities with ParksVictoria rangers every Wednesday from 9 am - 12 noon  
- meet at the Park Office  
- morning tea provided***

***Help is needed for a variety of jobs - everyone most welcome.***

***Wednesday afternoons continue from 1 pm - 3 pm in the Nursery & Community Garden.***



## Friends trip to Walhalla 21-22 November 2015

By Margaret Hunter



After several successful recent trips to the Dandenong Ranges, Mornington Peninsula and West Gippsland, the friends annual trip, organised very capably and with enthusiasm by Des Lucas was in November 2015, an overnight trip to the historic gold mining town of Walhalla in Gippsland. We used the Kingston Community Bus, and numbered 15 people, with a spirit of adventure. Thank you from all the group to Des for his organisation, and John for driving the bus on this trip on not unexpectedly winding roads, and up and down many hills and other environments.

Through this article there will photo's of Walhalla which have been provide by the proprietor of the Star Hotel. Thank you so much.

We proceeded down the Princes freeway (a lovely fast route) to morning tea at Erica, not knowing that Des was at Walhalla, waiting at the train – the West Gippsland Railway – at Thomson Station outside Walhalla.

A brief history of the train - The train was planned to go through to Walhalla from Moe from 1883, but finally made it in 1910 when the gold had run out and the population was



declining. It was a long trip from Melbourne on the Gippsland line to Moe with a change of trains and then onto Walhalla through the Thomson River gorge; it was a better option that the steep hills and windy tracks between Moe and Walhalla and was handy on one occasion when a rock fall isolated the town for ten days as it was the only way in and out of the town for supplies and people.

It is an old fashioned country train with comfortable seats, which the back can be turned around by the obliging guard (a volunteer) at one end of the line so that passengers can enjoy the view on the way back. He even

came and clipped our tickets (some may wonder what this is – no myki on this line!) and then returned them to us as a souvenir of the journey. The railway is run by volunteers, and is a popular and well-priced tourist attraction.

On getting into Walhalla for lunch and a stroll around the town, - the coffee shop was popular – some members of the group walked the old tramline walk to the poppet head of the old mine while others enjoyed the special environment that is Walhalla today with many old shops, a church, the Star and Windsor hotel, and the iconic band rotunda. It is the perfect spot for special occasions, even weddings (with one taking place on that day) and Saturday evening ghost tours. The population of the town (permanent) is 20.

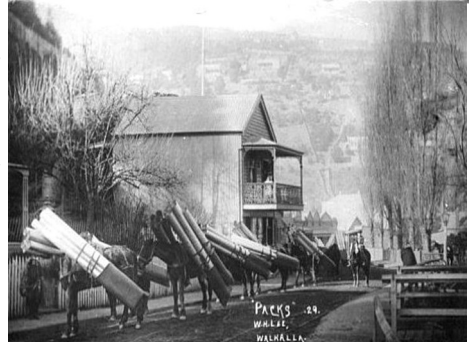
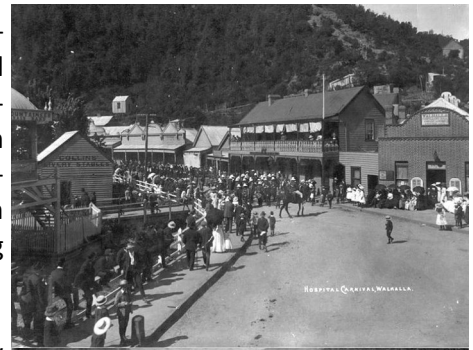
We then went on a tour of the Long Tunnel Mine with an extremely knowledgeable guide, who has been guiding since 2006, and never stopped talking. The mine tour involved seeing how mining has changed since the 1800's, with better facilities for the miners and enhanced safety. Most of the miners had a short life, as is evidenced by the graves in the cemetery, an item for our next visit, as is the cricket ground.

On arrival at the Rawson Caravan Park, as Rawson we had dinner at the Stockyard Bistro. The meals were true country style, with chips and salad, as well as large steak and accompaniments. The venue was set up in stockyard style (authentic) and as the staff member said 'you never go hungry here". No one was hungry after the meal which was enjoyed by all with the opportunity to enjoy a social chat in a different environment. Breakfast next morning was similarly enjoyed by all, and included.

On the Sunday, after a relatively early start, and a good breakfast, we visited the Thomson Dam, built in 1984, which supplies water to Melbourne, and has good views of the mountainous environment and fresh air which we all enjoyed. Morning tea with heathers fruit cake and other treats was enjoyed in the picnic ground overlooking the dam. We also then went to the Moondarra Reserve, which is a local water supply, and was of earlier construction opened in 1961. Many small Gippsland towns were flooded, including Gould, with the old hall re-erected on site. It was interesting to compare the two sites, and a good chance to experience the fresh clean Gippsland air and flora and fauna. Then onto the freeway for a surprise lunch at Warragul, which was appreciated by all, and a 5.00 pm arrival at Braeside after an enjoyable and interesting weekend with many things learnt and friendships maintained and started. Once again, thanks to Des, and Kathryn for their superb organisation, and John and Heather for assisting with the driving of the community bus.

The regulars will be back for the annual trip next year, as Des is a wonderful tour guide.

If you are interested, in further information on Walhalla/Gippsland, or want more information on the area, it well worth following up with Gippsland tourism sites. It is a magical place, worth a return visit. Why not come along on the next trip, you never know where you will end up in 2016.

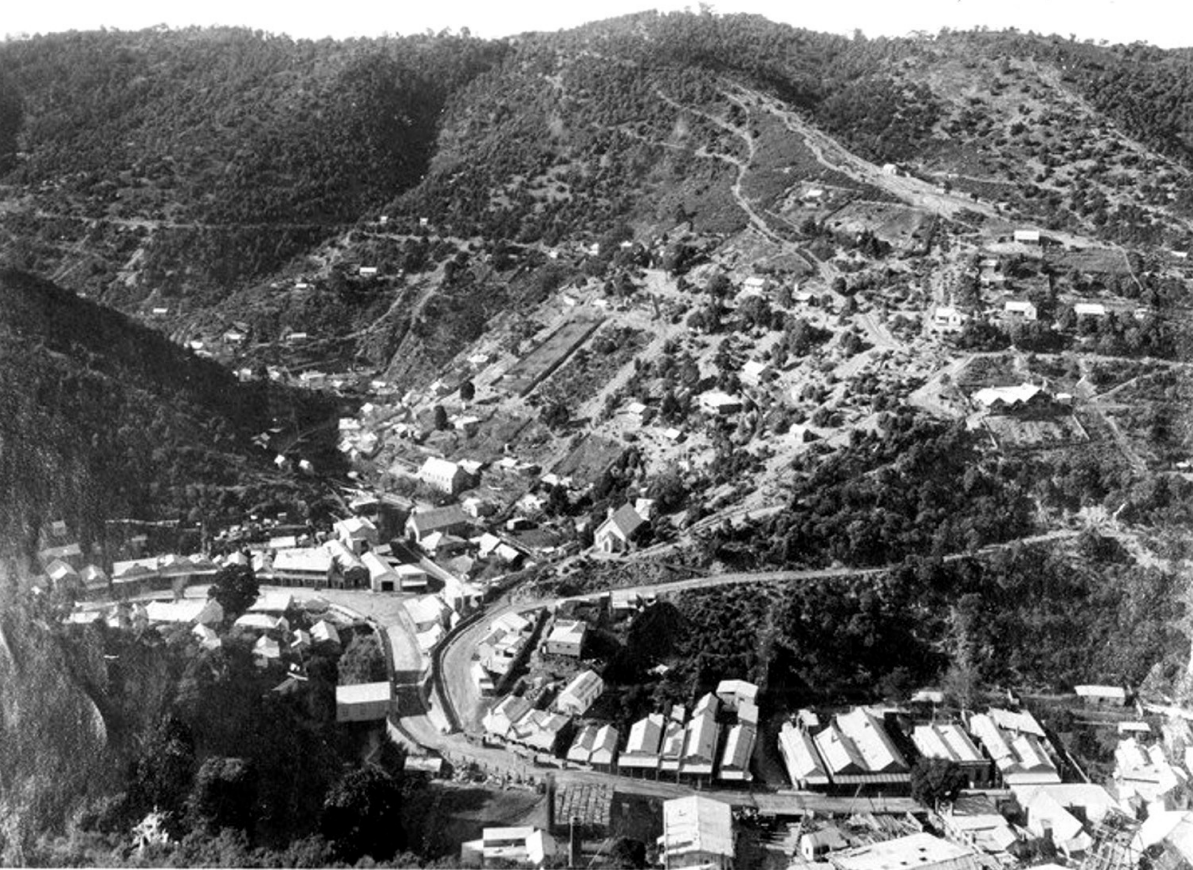


## Message from the Editor

By Kathryn Lucas

Welcome to our first edition for 2016. Hope everyone had a enjoyable Christmas and new year. So hard to imagine that Easter is now knocking on the door.







## Fire at Wye River & Separation Creek

by Des Lucas (photos sourced by Des Lucas January 2016)



This shows how tough the fire fighting must be given the terrain and the lack of access via roads into the forest.

The top photo certainly shows that the fire burn't into the residential edges of Wye River.

Its only been in the last few days that this fire has been contained as it destroyed 116 homes in Wye River and Separation Creek.

It also burn't over 2,500 hectares of forest and consumed many native animals. There are many that are being cared for by wild life carer's



## The First Flower Grown in Space?

By Robert Z. Pearlman, collectSPACE.com Editor | January 21, 2016 11:26am ET - See more at: <http://www.space.com/31687-zinnia-not-first-flower-in-space.html#sthash.P3zqV9ho.dpuf>

First flower ever grown in space makes it debut. With that declaration NASA astronaut Scott Kelly revealed to the world the bright orange zinnias that had blossomed on board the International Space Station on January 16. Thank you to Frank Russo for sharing this article.

The [bright orange zinnias that had blossomed](#) on board the International Space Station on Jan. 16.



### Bird Monitoring Program

Are you interested in birds?  
Why not join Bird Life Australia group on the 4th Friday of each month  
See that activity calendar for details.

So grab you binoculars, camera and favourite field guide and head down to Braeside Park!

For further information and a copy of the monitoring sheets  
please contact the park office on 9265 7300



## The Friends of Braeside Park Night Activity Program 2016

**The Friends invite you to  
attend a night walk to view nocturnal  
animals of the park**



**On Friday Nights at 7pm  
April thru to September  
Dates 8<sup>th</sup> April, 6<sup>th</sup> May, 3<sup>rd</sup> June,  
1<sup>st</sup> July, 5<sup>th</sup> August & 2<sup>nd</sup> September**

**Meet at Visitor Centre  
Braeside Park, Lower Dandenong Rd, Braeside  
Melways Map 88 Reference D8**

**Cost: Gold Coin Donation per person  
Numbers Limited - Bookings Essential**

**Via email**

**[braesideparkfriends@gmail.com](mailto:braesideparkfriends@gmail.com)**

[www.braesideparkfriends.org.au](http://www.braesideparkfriends.org.au) for more info

## **Park Report**

*As reported by Des Lucas, Ranger in Charge*

An other year has passed and a new one begun - one wonders what challenges will come our way in 2016.

But lets reflect a little on 2015 which threw a mixture of things the parks way. A Green Army Team has been helping with a variety of tasks throughout the park including rabbit proof fencing, general fencing, seed collection, pricking out of newly grow seedlings and cuttings, they have produced over 10,000 for the park which will be planted in the cooler months this year. Add to this litter pick up, weed control in the heathland and throughout car parks and spreading of mulch as well and the odd other park maintenance issue. The group has also been through most of the park collecting the tree guards and frames used in previous planting programs and recycling what could be saved. It just goes to show that these programs help the park along immensely.

In March there was several reports of wasps throughout the picnic areas and two reports of people being stung. A program was put together to control and thus deal with the wasps problem. In total 43 was nest were treated and destroyed over the April May period.

The Park had a television ad for the Holden Storm filmed in and around the playground in September—not sure that its still on the tv.

Parks Victoria implemented a new management structure with staff now reporting to an Area Chief Ranger based at the Parks office at Lysterfield. Further changes are pending in relation to staff rostered for weekend work. This certainly has potential to impact on volunteer activities.

The Dingley Village Men's have assisted with the construction and installation of trail seats and soon the installation of picnic tables which have utilised recycled material from the Mordialloc Pier. They certainly look rather rustic. Further to this they have assisted with other park project including the replacement of posts on the Birdhide fence, minor repairs to other park assets such as the visitor centre.

They also constructed a tool which is utilised to stack tree guards that are being collected to be recycled into the revegetation program. The Green Army have utilised this tool.

Revegetation of the Park continues with the focus more on the middle and lower storey species. So that means lots grasses and shrubs are what's needed.

### **Tree Risk**

There has been much tree risk pruning and chipping of cut vegetation during that last 12 months.

How do we address the following:

Over the years there has been a variety of environmental programs delivered which has seen the environmental values of the park increase. But one area that is suffering is the number of trees with hollows, usually they are dead. There has been several that have fallen over his last year and this certainly concerns staff. If it continues many of the dead tress will be on the ground in the next 10 years. The question is about what is to be done to address this? Yes there has been lots of canopy and future hollow bearing tress planted throughout the park but in most cases that can take from 80 to 120 years for the hollows to be formed depending of the actual tree specie.

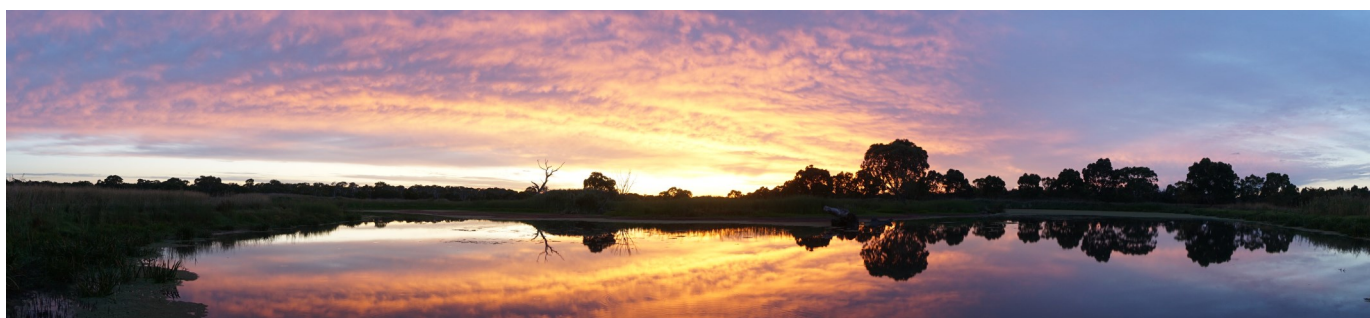
Rangers are interested in your feed back in relation to setting up and managing a nest box monitor-



## Bird Report

As reported by Margaret & Ian Langdon, Steve McDonald and park staff.

Australian Pelican	Red-kneed Dotterel	Grey Shrike-thrush
Black Swan	Black-fronted Dotterel	Willie Wagtail
Australasian Darter	Black-shouldered Kite	Grey Fantail
Little Pied Cormorant	Whistling Kite	Magpie-lark
Great Cormorant	White-bellied Sea-Eagle	Grey Butcherbird
Little Black Cormorant	Wedge-tailed Eagle	Australian Magpie
Australasian Grebe	Little Eagle	Little Raven
Hoary-headed Grebe	Brown Falcon	Welcome Swallow
Pacific Black Duck	Common Bronzewing	Eurasian Skylark
Grey Teal	Galah	Golden-headed Cisticola
Australian Wood Duck	Crested Pigeon	Red-browed Finch
Chestnut Teal	Sulphur-crested Cockatoo	Mistletoe Bird
Australian Shoveler	Rainbow Lorikeet	European Goldfinch
Hardhead	Eastern Rosella	Common Blackbird
Buff-banded Rail	Red-rump Parrot	Common Starling
Dusky Moorhen	Tawny Frogmouth	Common Myna
Purple Swamphen	Laughing Kookaburra	Rock Dove
Eurasian Coot	Superb Fairy-wren	Spotted Turtle-Dove
White-necked Heron	Spotted Pardalote	
White-faced Heron	White-browed Scrub-wren	
Cattle Egret	Brown Thornbill	
Great Egret	Red Wattlebird	
Australasian Bittern	Noisy Miner	
Australian White Ibis	White-plumed Honeyeater	
Straw-necked Ibis	New Holland Honeyeater	
Yellow-billed Spoonbill	Eastern Spinebill	
Masked Lapwing	Flame Robin	



## Friends of Braeside Park—Activity Calendar

### Weekday Community Project-The A Team:

Every Wednesday with Ranger staff commencing at 9:00 - 12:00 from the Park Office.  
Activities can include weeding, mowing weeds, mulching, planting, fencing etc.

### Community Garden:

3rd Sunday, monthly from 9:30 to 12:00 Noon.  
A short meeting followed by various garden and nursery activities.

### Nursery - Plant Propagation:

1st Saturday and 3rd Sunday from 10:00 am to 12:00 Noon and  
Every Wednesday 1pm to 3pm  
Undertaking a variety of propagation activities.

### Committee Meeting:

2nd Thursday, monthly 7:00 to 9:00pm at the Park Office.  
The Committee meets to make decisions about the running of the group.

### Water Quality Monitoring:

3rd Tuesday, monthly 9:00 to 12:00 noon from the Park Office.  
Water samples are taken and monitored from the Dingley Waterway and Wetland.

### Bird Observations:

A set bird observation is completed monthly around the main wetland.  
Call Ranger Glen Oliphant on (03) 9265 7300 to become part of this program.

### Birds Australia Monitoring Program:

10 bird monitoring transects are monitored in this program with 5 completed one month and the  
Other 5 the next month.  
These sessions occur on the 4th Friday of each month from 8:00 am alternating between the  
following starting locations.

Park Office January, March, May, July, September, November  
Robin Car Park February, April, June, August, October, December

### Special Activities:

Night walks are offered from April through to September. Gold Coin Donation. For details and bookings contact the park office on 9265 7300.

**Community Nursery is Open on the Third Sunday of the Month  
10:00 am to 12:00 noon – Seedlings \$2.00 each.**

### Friends of Braeside Park Inc.

**President:** Judith Sise

**Secretary:** Margaret Hunter **Assistant Secretary:** Currently vacant

**Treasurer:** Bev Bancroft **Newsletter Editor:** Kathryn Lucas **Webmaster:** Frank Russo

**Publicity Officer:** Currently vacant

**Postal Address:** PO Box 608 Braeside, Vic. 3195 **Phone:** (03) 9265 7300

**Email:** braesideparkfriends@gmail.com **Web:** [www.braesideparkfriends.org.au](http://www.braesideparkfriends.org.au)

**ACN:** A 002 4027 B

Join us on Facebook